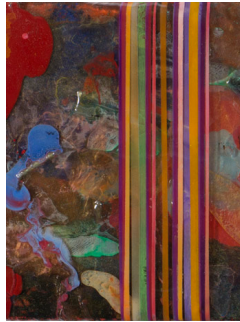


masami koda *seeds of qualia*

alan fulle *blocks and stripes: sculpture in paintings*



exhibition dates: june 5 - 29, 2014

opening reception: thursday, june 5, 5-8pm

-----  
In her new exhibition, *Seeds of Qualia*, Masami Koda presents 4 large scale sculptures that explore themes of environment, change, and perception. Seamlessly combining glass with various metals, Koda creates conceptual worlds of wonder in which simple natural forms prompt the viewer to consider a larger spiritual and personal context.

Qualia is a philosophical term used to describe individual instances of subjective, conscious experience. Koda prompts us to look and engage with our own perception of the work, but also to consider the unique experience of others, known to us or unknown. She describes a moment in a garden with her husband, "'Look at the gray leaves' he said to me. What I saw was the newly grown leaves and they were dark red but covered with a white downy hair - I saw the red primarily, but he primarily saw the gray. We saw the same thing, but our experience of it was unique...this happens often but our conversations happily continue without recognition of the different perceptions in us." These everyday perceptions, these experiences that happen outside of our awareness, are what Koda invites us to ponder.

Traver Gallery is proud to present *Blocks and Stripes: Sculpture in Painting*, a solo exhibition featuring new work by Seattle painter and sculptor Alan Fulle. The show features paintings from two distinct bodies of new painted works: the *Stripe Series*, and the *Block Series*. In the *Stripe Series*, Fulle continues to develop the controlled abstraction for which he is widely recognized. Fulle layers paint and resin in a loose fluid manner, allowing it to pool and drip in to richly hued, sometimes transparent fields of color. Gestural and loose at their heart, these paintings are punctuated by intervals of vertical stripes - a tight and measured contradiction to the tangle of organic unsystematic forms that lay beneath them.

Exhibited in tandem with *The Stripe Series*, Fulle introduces *The Block Series*, a new series of paintings that incorporate, both physically and conceptually, the artist's sculptural explorations in to the paintings themselves. Integrating square blocks of resin in to the poured and painted resin surface of his compositions, Fulle again presents a contrast between the ordered and the random. Alan says of this new body of work "The *Block* paintings refer to the sculpture; the random versus the ordered, the cut and architectonic versus the organic, flowing, bright forms...the elevation difference between the cut blocks and the surface layers give a tactile childlike interplay between the various expressions."